

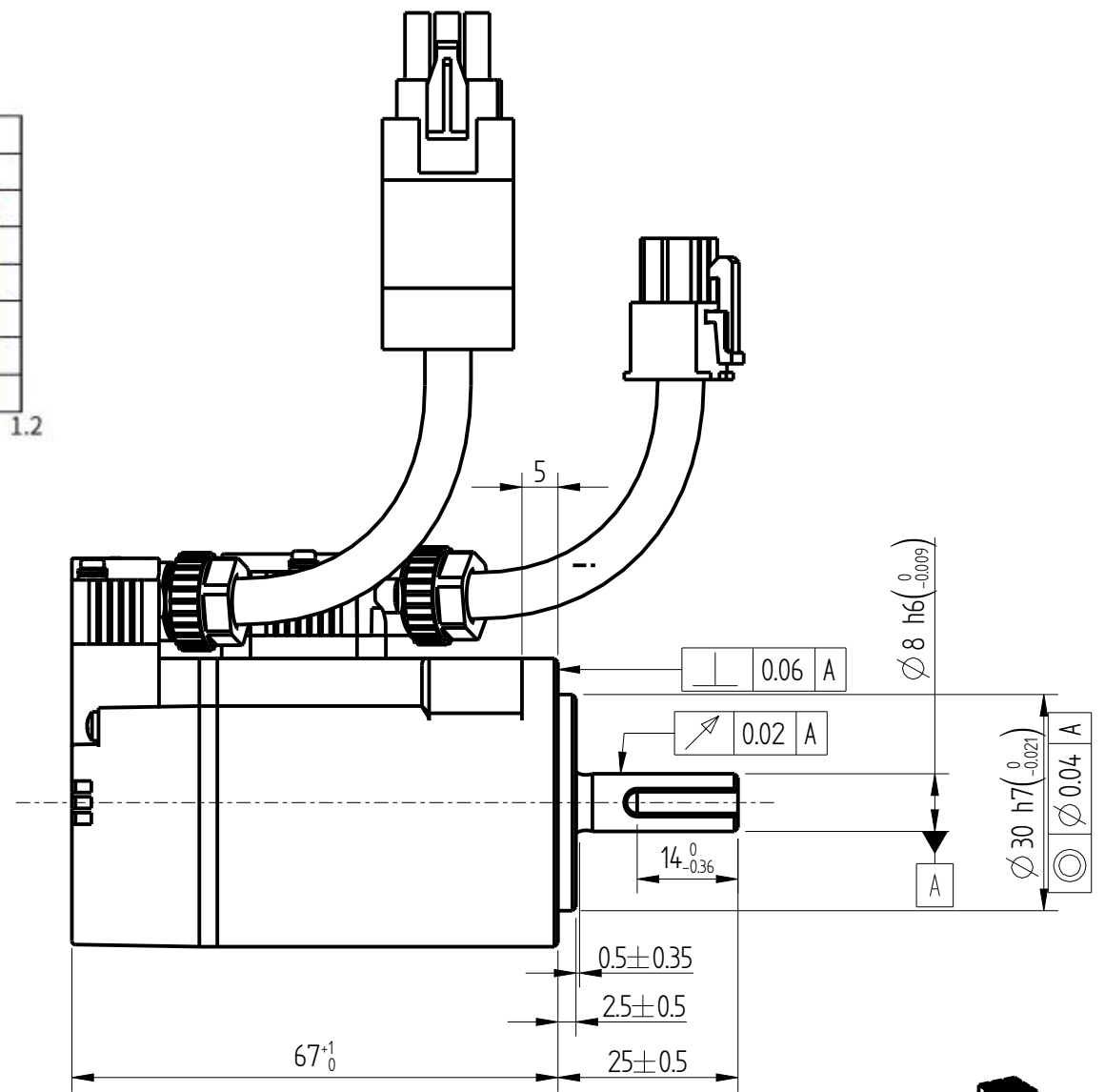
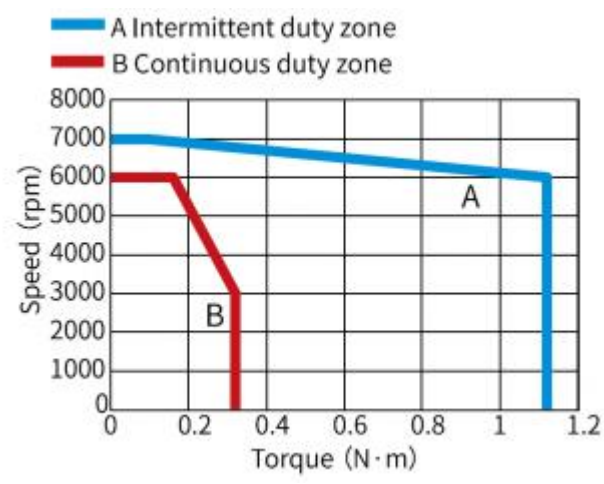
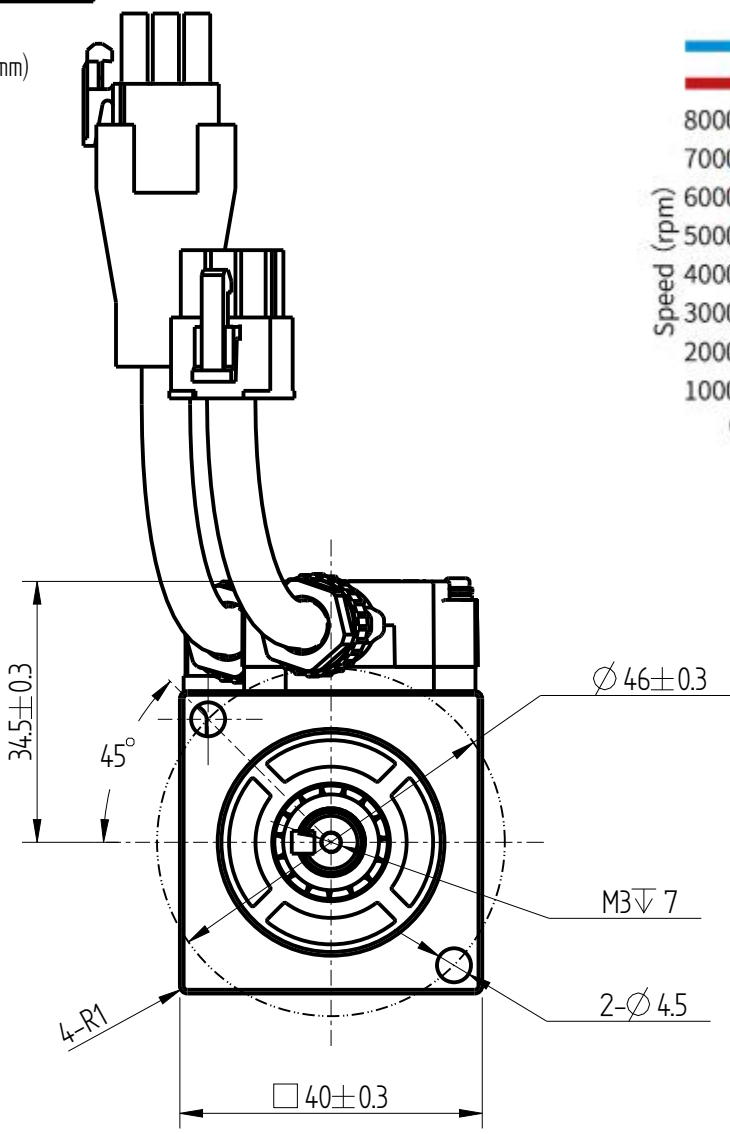
Copyright:Copyright infingmengt reserved

INOVANCE

A3

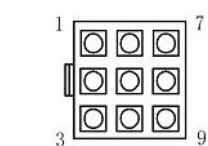
Amendment	Description

Unit: Millimeter (mm)



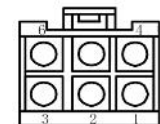
Encoder adapter connector Power wire adapter connector

Basic function parameters	
Rated power kW	0.1
Rated voltage V	220
Rated current A	1.2
Peak current at rated speed A	4.8
Rated torque Nm	0.32
Peak torque at rated speed Nm	1.12
Rated speed rpm	3000
Max speed rpm	7000
Rotor inertia kg·cm ²	0.0316±10%
Encoder resolution	23bit
Insulation class	F(155)
Protection class	IP67
Static torque of brake Nm	/
Brake power supply V	/
Brake backlash°	/
Duty cycle	S1
Radial load N	≤78
Axial load N	≤54



Encoder adapter connector

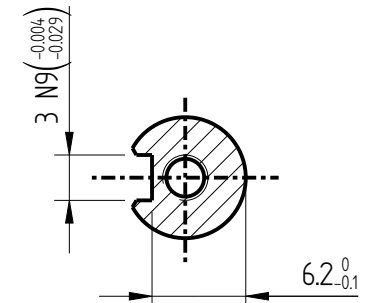
9pin terminal	3	6	1	4	9	8	7
Core color	blue	purple	brown	black	red	orange	groud wire
definition	PS+	PS—	DC+	DC—	+5V	0V	shield
	Pair		Pair		Pair		



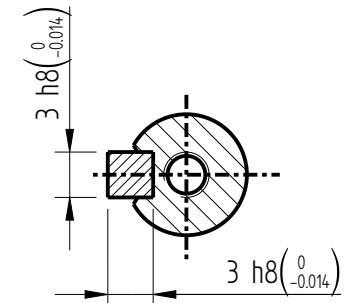
Power wire adapter connector

6pin terminal	5	4	2	1	3	6
Core color	chartreuse	red	yellow	white	brown	blue
definition	PE	W	V	U	BK+	BK—

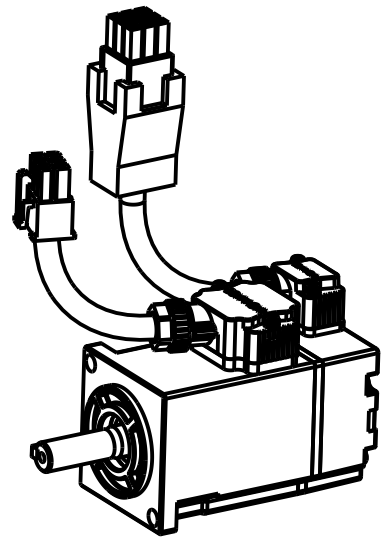
note:
1、The lead wire cable length is 300±20mm




Dimension of shaft end



Dimension of shaft end with key



				Motor Outline Drawing			0111A160-WX	
B02	Replace	/	20250526					
Version	Change method	Changed by	Date	/			Mark	
Design	/							
Check	/							
Craft	/							
Verify	/			Weight	Scale	Version	Page 1 of 1	
Standardization	/			0.35kg	2:1	B02	Model	MS1H1-10B30CB-A330R-S-INT
Approve	/							